



## **PURCHEK AND CART CONTROL** ANTI-THEFT SECURITY SYSTEMS



<b>1. Anti-theft security systems .....</b>	<b>3</b>
1.1 Purchek.....	3
1.2 Cart Control .....	3
1.3 Smart Wheels .....	4
<b>2. Purchek.....</b>	<b>5</b>
2.1 Functions .....	5
A. Example of a typical purchase.....	5
B. Example of cafeteria entrance without access to the sales floor .....	6
C. Example of attempted theft involving trolley .....	7
C.1. Through the main entrance .....	7
C. Example of attempted theft involving trolley .....	8
C.2. Per closed box.....	8
C. Example of attempted theft involving trolley .....	9
C.3. Through the emergency exit.....	9
2.2 Purchek camera .....	10
<b>3. Cart Control.....</b>	<b>11</b>
3.1 Functions .....	11
A. Perimeter security system.....	11
B. Entry / Exit security system.....	12

# 1. ANTI-THEFT SECURITY SYSTEMS

## 1.1 Purchek



The Purchek system reduces shrinkage by preventing trolleys from leaving the sales floor without going through the checkout. The major benefits of this system are:

1. **Reduction of unexplained losses.** Theft involving shopping trolleys accounts for approximately 4% of all shrinkage. ([see the study](#)).
2. **Avoid confrontations** between shoplifters and shop staff: cashiers, security, etc. ([see video](#))
3. **It is a silent system.** It goes unnoticed by all shoppers who are not trying to steal.
4. **Attempted robberies are recorded.** It protects the retailer legally.
5. It uses **the same wheels that are already installed with the Cart Control system**, you only need to install the system. The return-on-investment is immediate.
6. It becomes a **deterrent**. After 3 weeks, attempted robberies will drop by almost 50%.

## 1.2 Cart Control

The Cart Control system **prevents theft of trolleys** by blocking the wheels if anybody attempts to remove the trolley from the area defined by the establishment. This system is currently installed at some of the **very best international retailers**.

The major benefits of Cart Control are:

1. **It keeps each trolley within the premises,** preventing theft of the asset.
2. **Staff savings.** Workers no longer spend their time searching for and retrieving trolleys.
3. **Resource savings.** By preventing theft of the trolleys, replacement costs are avoided. It is also not necessary to have a fleet on standby to deal with gradual, constant theft of trolleys.
4. **Reduction of the CO2 footprint.** Trolleys do not end up on the scrap heap before their time.
5. **Facilitates investment in more advanced trolleys** with the aim of improving the customer shopping experience.
6. **Avoids confrontations with shop staff.** The thief is unable to take the trolley because the wheels are blocked.
7. **Automatic unlocking.** Moving the trolley towards the facility will unlock the wheels, making it 100% operational again.



### 1.3 Smart Wheels

At Carttec, we eliminate risks and provide peace of mind to our customers' businesses, protecting their investment with high-quality, accurate security systems.

Smart Wheels are designed to work in conjunction with CartControl to prevent the theft of trolleys and with Purchek to avoid the theft of products from the establishment. Both systems are complementary, and we recommend installing them together for maximum safety.

#### QS Rubber locking wheels

Ref. R90077



#### Travellator Ramp locking wheels

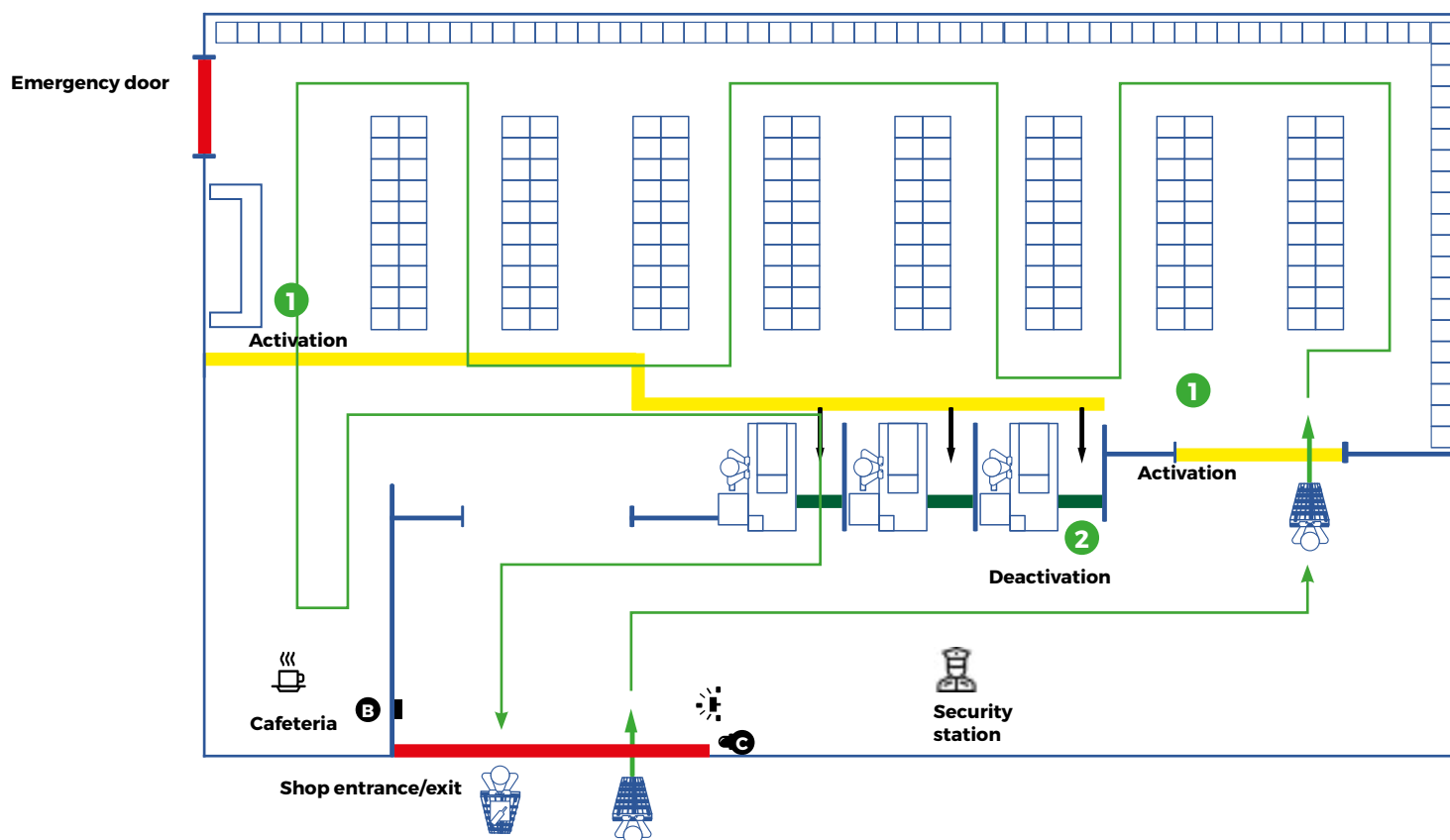
Ref. R90078



## 2. PURCHEK

### 2.1 Functions

#### A. Example of a typical purchase



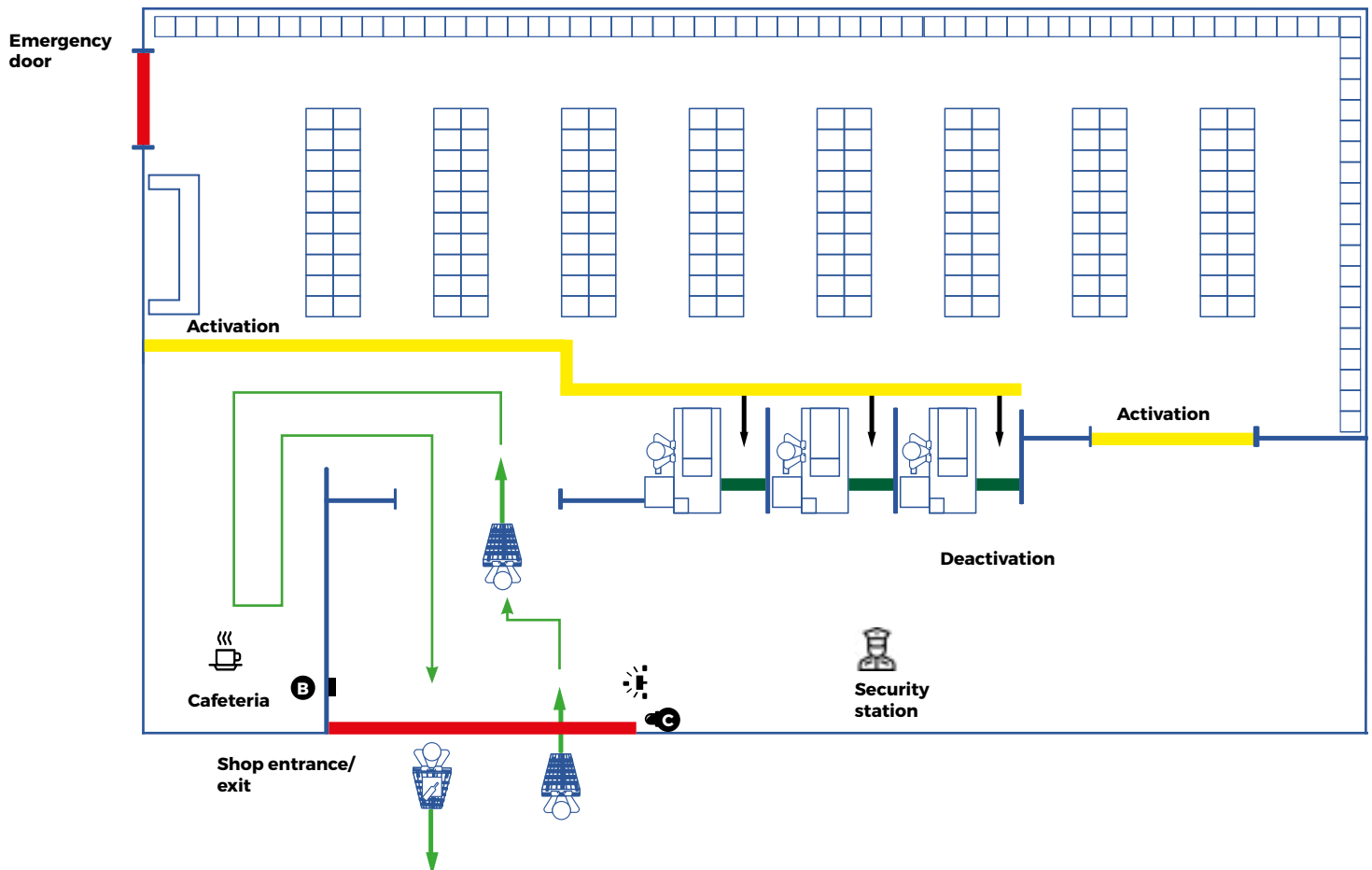
**1 Entrance to the commercial space**  
The customer enters the commercial space, passing through the activation field. This activates the trolley's Smart Wheels so that they are ready to lock if necessary.

**2 Supermarket checkout**  
When the customer passes through the checkout upon finishing their shopping, the Smart Wheels receive the "deactivation" signal, allowing the customer to exit the shop.

The PurcheK system allows customers to visit other services or areas within the commercial space. The system is non-invasive, so the user's shopping experience is not affected. The customer leaves the establishment without being aware that the PurcheK system was in operation.

The PurcheK switchboard is connected to the supermarket's PCI. In the event of an emergency or evacuation, all devices will emit an unlock signal. The Smart Wheel will therefore not be blocked and will not impede traffic.

**B. Example of cafeteria entrance without access to the sales floor**



### 1 Entrance to cafeteria

The customer enters the cafeteria but does not enter the sales room and does not pass through the activation field.

## 2 Shop exit

As the system has not been activated, the customer can leave the shop without any blocking occurring

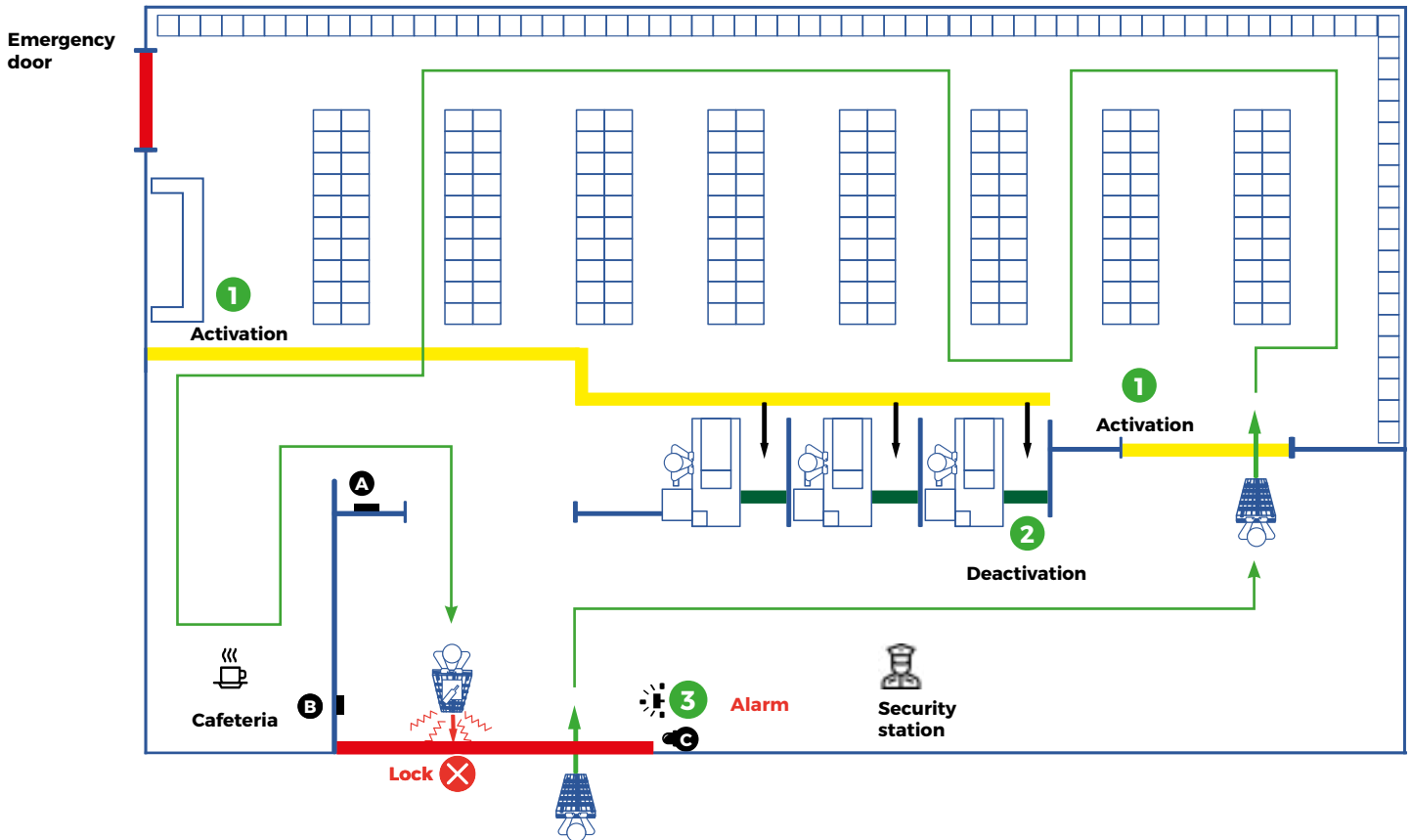
The Purchek system allows customers to visit other services or areas within the commercial space. The system is non-invasive, so the user's shopping experience is not affected. The customer leaves the establishment without being aware that the Purchek system was in operation.

The Purchek switchboard is connected to the supermarket's PCI. In the event of an emergency or evacuation, all devices will emit an unlock signal. The Smart Wheel will therefore not be blocked and will not impede traffic.



## C. Example of attempted theft involving trolley

### C.1. Through the main entrance



#### 1 Entrance to the sales room

A thief enters the commercial space, passing through the activation field. The trolley's Smart Wheels are ready to lock if necessary.

#### 2 Supermarket exit without going through the checkout

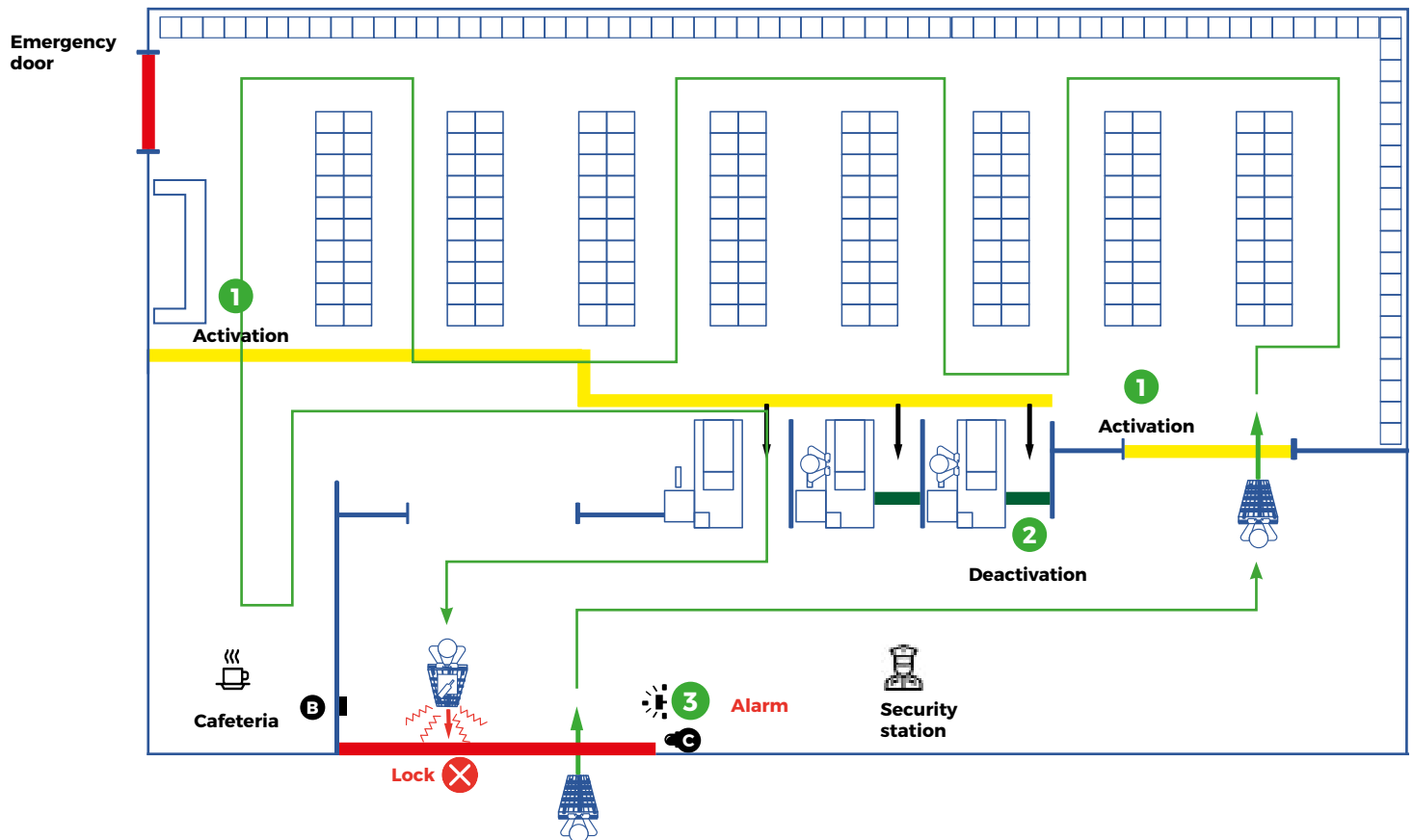
When the thief tries to leave the supermarket through the main door without going through the checkout, the Smart Wheel automatically locks, preventing the trolley from leaving the shop.

#### 3 Alarm activation

As soon as the system detects a trolley entering these restricted areas, the Smart Wheels stop and an alarm is triggered, alerting the supermarket staff concerning the exit where the theft is taking place. The alarm is audible and visual.

## C. Example of attempted theft involving trolley

### C.2. Per closed box



#### 1 Entrance to the sales room

A thief enters the commercial space, passing through the activation field. The trolley's Smart Wheels are ready to lock if necessary.

#### 2 Supermarket exit without going through the open checkout

When the thief sneaks through a locked checkout, the system is not deactivated and the Smart Wheel automatically locks, preventing the trolley from leaving the shop.

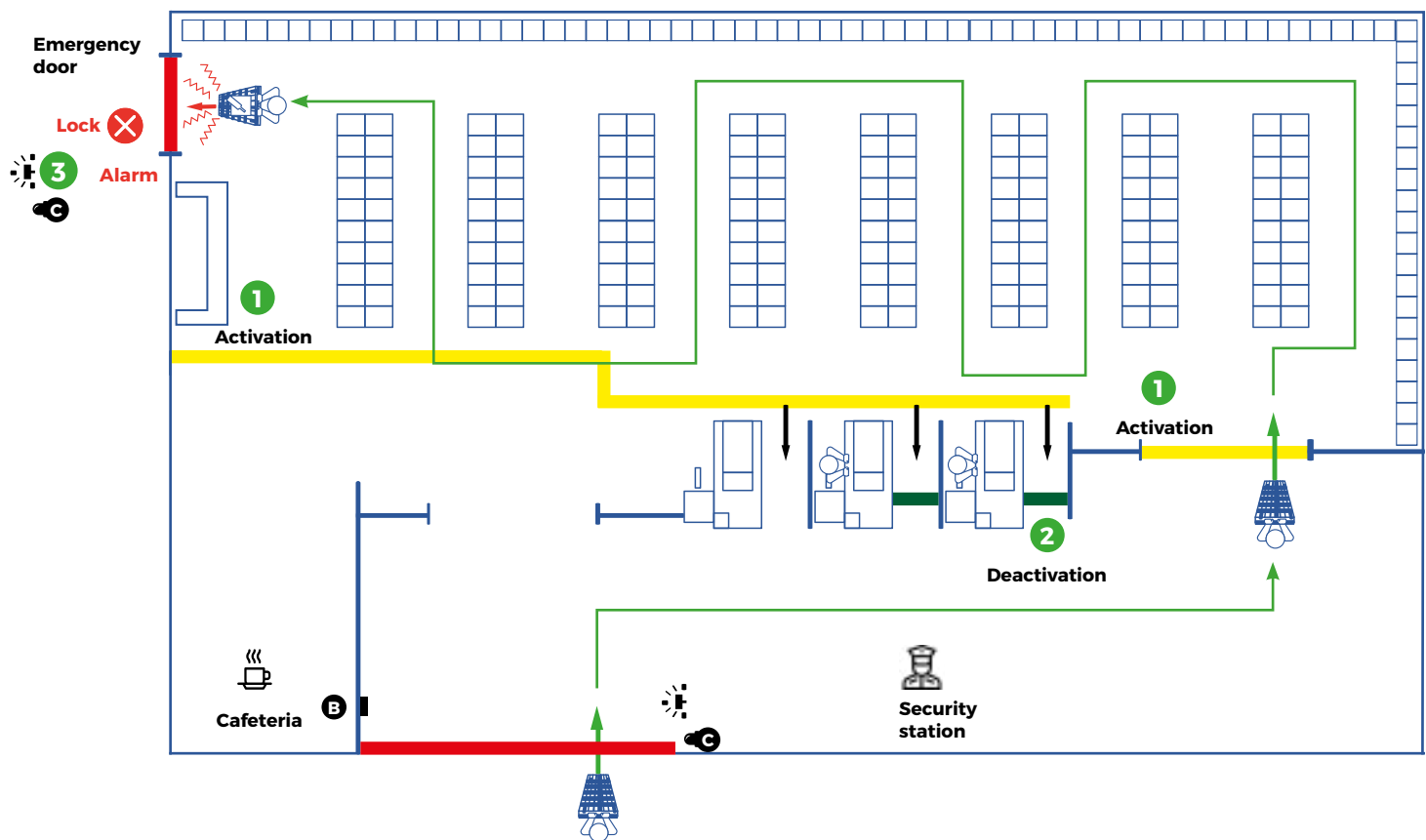
#### 3 Alarm activation

As soon as the system detects a trolley entering these restricted areas, the Smart Wheels stop and an alarm is triggered, alerting the supermarket staff concerning the exit where the theft is taking place. The alarm is audible and visual.



### C. Example of attempted theft involving trolley

#### C.3. Through the emergency exit



#### 1 Entrance to the commercial space

A thief enters the commercial space, passing through the activation field. The trolley's Smart Wheels are ready to lock if necessary.

#### 2 Exiting the supermarket through the emergency exit door

When the thief tries to leave the supermarket through an emergency door, the Smart Wheel automatically locks, preventing the trolley from leaving the shop.

#### 3 Alarm activation

As soon as the system detects a trolley entering these restricted areas, the Smart Wheels stop and an alarm is triggered, alerting the supermarket staff concerning the exit where the theft is taking place. The alarm is audible and visual.

## 2.2 Purchek camera

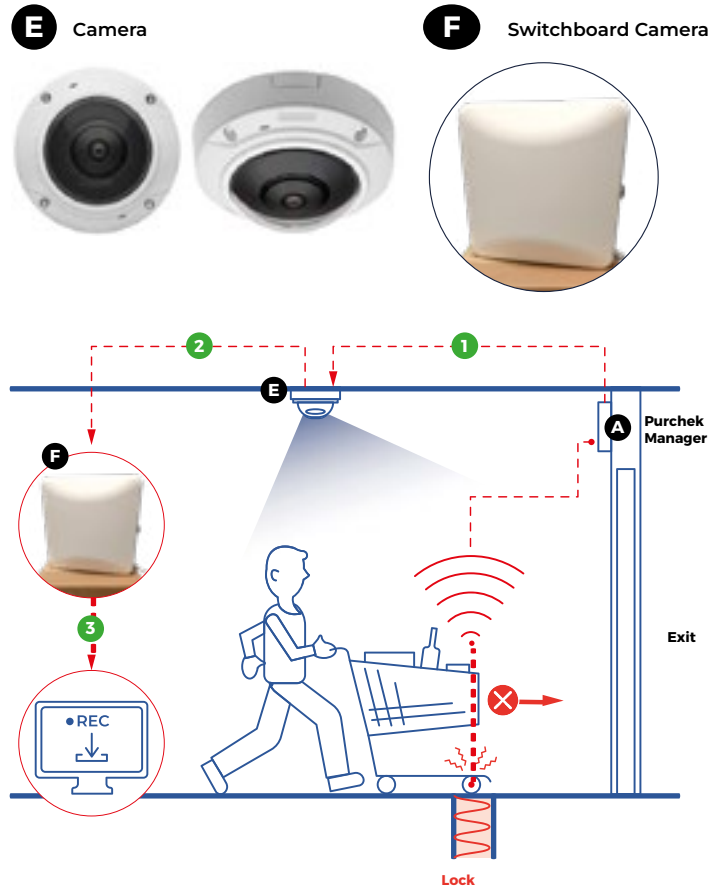
### Components

- 1 When the system detects a trolley in the locking area without first passing through the checkout counters, Purchek sends a signal to a camera facing the entrance and exit of the establishment.

- 2 At the time of an attempted robbery, the camera stores a specific range of 20 seconds (10 seconds before the incident and 10 seconds after). A second switchboard connected to the Internet sends the recording to a platform where it is stored appropriately.

In this way, the peace of mind of the establishment's employees is guaranteed, avoiding possible confrontation between customers and supermarket workers.

The system can be connected to the establishment's own cameras.



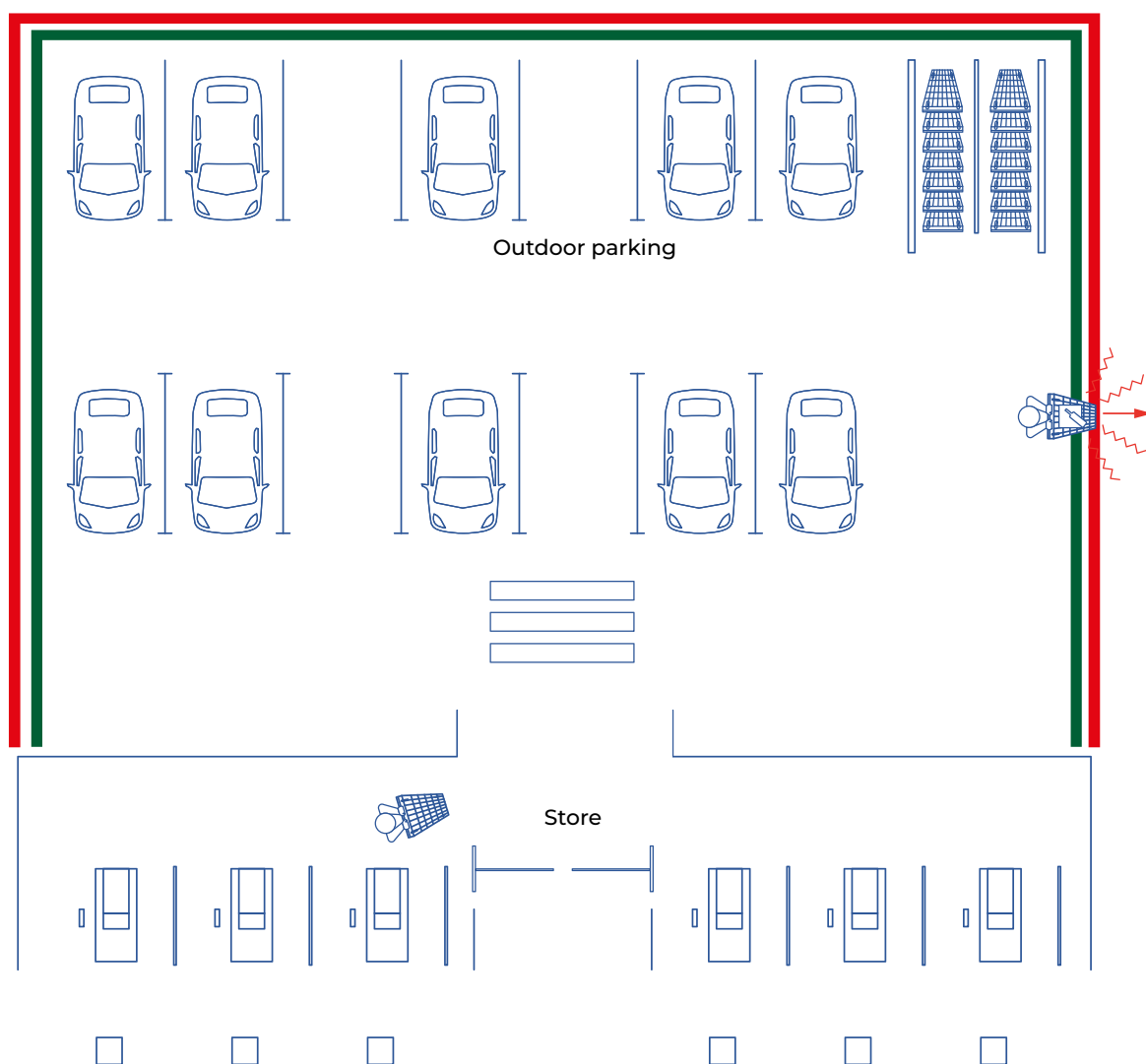
## 3. CART CONTROL

### 3.1 Functions

At Carttec, we care about your business every day. For this reason, we have implemented the Cart Control anti-theft security system, an invisible barrier that blocks shopping trolleys when they try to leave the shopping area. This solution prevents theft efficiently and cost-effectively.

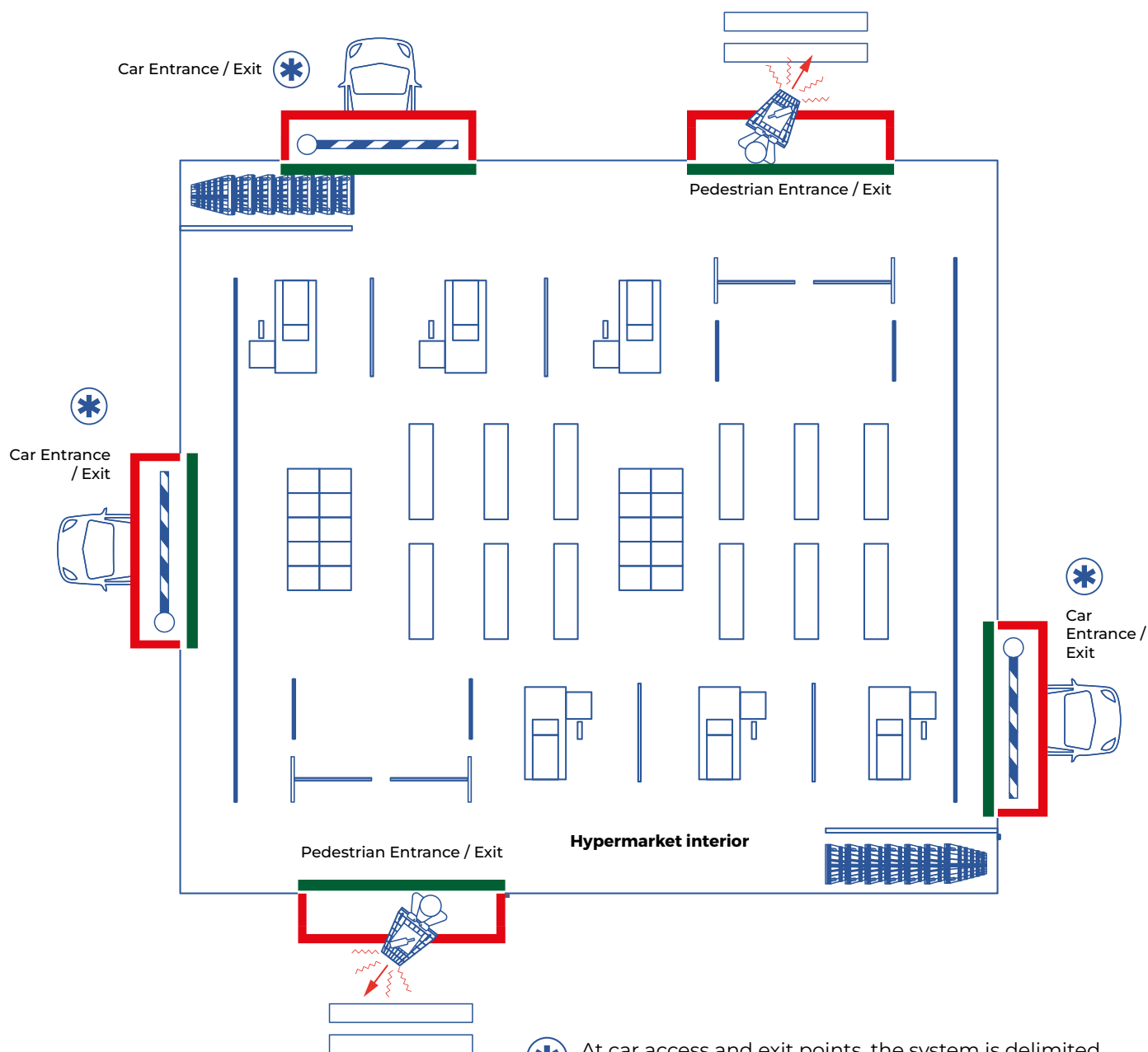
When a trolley crosses the blocking area, the Smart Wheel stops when it receives the signal sent by the Central Transmitter through the concealed cables. The design of the wheels, designed for both outdoor and indoor use, works on any type of surface.

#### A. Perimeter security system



- The locking wheels are activated, and the trolley cannot leave the premises.
- The locking wheels are deactivated, and the trolley is operational again, inside the enclosure.

## B. Entry / Exit security system



⊛ At car access and exit points, the system is delimited by the exit area for both pedestrians and vehicles, preventing the trolley from exiting.

■ The locking wheels are activated, and the trolley cannot leave the premises.

■ The locking wheels are deactivated, and the trolley is operational again, inside the enclosure.



[www.carttec.com](http://www.carttec.com)



[info@carttec.com](mailto:info@carttec.com)



+34 916 574 011



Carttec On Wheels



Carttec On Wheels



@Carttec