

1. Sector Context and Workplace Accidents

The **logistics sector** is essential to the economy, but it is also considered one of the **most dangerous** to work in. In Spain, it ranks highest in the number of **workplace fatalities**

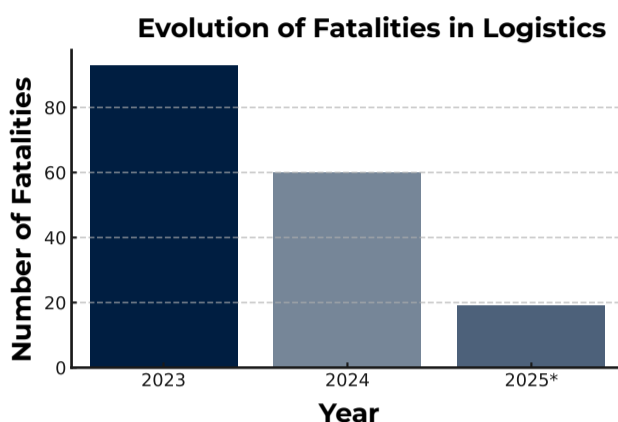
According to the **official report** from the Spanish Ministry of Labor and Social Economy, specifically the “January – February 2025 Progress Report” on Workplace Accident Statistics, **the transport and storage sector** recorded **6,774 accidents** that resulted in **medical leave** during the first two months of 2025.

This alarming figure highlights the urgent need to **strengthen occupational risk prevention measures**. Frequent interactions with **manual operations, heavy vehicles, and shared spaces** between pedestrians and machinery contribute to a **constant risk** of accidents.

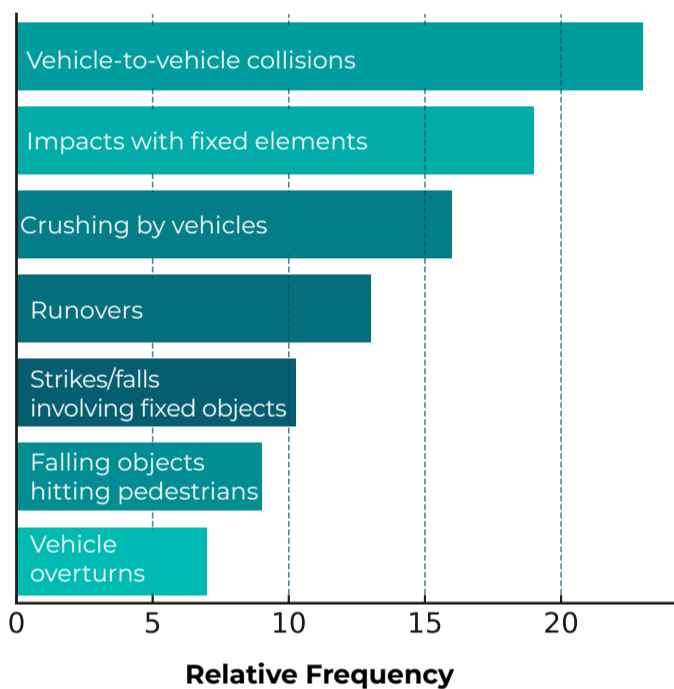
2. Evolution of Workplace Accidents

According to **INSST and MITE**, workplace accidents in this sector have shown a worrying trend:

- **Fatalities in 2023:** 93 deaths caused by crashes or collisions with moving objects.
- **Fatalities in 2024:** Deaths dropped to 60, but non-fatal collisions of this kind rose by **over 190%**, reaching **60,565 cases**.
- **Current period in 2025:** So far, **19 deaths** have already been reported, surpassing the same period last year and suggesting a possible new surge.



3. Most Common Work Accidents in These Sectors



4. Additional Consequences

Beyond Fatalities

Fatalities are the most tragic consequence of occupational risks in the logistics sector.

Accident statistics also translate into other high-impact consequences for companies and society:

- **Work absenteeism:** After an accident, workers may face long-term medical leave due to physical injuries or psychological aftereffects. This directly affects daily operations.
- **Economic costs:** Companies must bear the costs of compensation, activity interruptions, productivity loss, and material damage.
- **Loss of talent:** An unsafe work environment discourages the retention of qualified workers and hinders the recruitment of new profiles.
- **Reputational damage:** A company's image can be negatively affected, impacting business relationships and customer trust.

5. Measures and Prevention

CRASH STOPPER
—ZERO RISK—

Crash Stopper is introduced as an **advanced technological solution** designed to **reduce workplace accidents** in logistics environments.

What is Crash Stopper?

Crash Stopper is a **prevention system** that detects risk situations between vehicles and pedestrians inside logistics facilities. It operates through **smart sensors and visual and acoustic alerts**, which warn drivers and workers **in real time** about potential collisions or imminent runovers.

What does it offer?

- **Proactive prevention:** The system acts before an accident occurs, saving lives and reducing damage.
- **Flexible installation:** It can be adapted to different environments, from logistics centers to industrial warehouses or distribution plants.
- **Universal compatibility:** It integrates with already existing vehicles and structures without the need for complex modifications.

In addition to implementing technological solutions like **Crash Stopper**, it is essential to adopt other preventive measures:

- **Mandatory use of Personal Protective Equipment (PPE):** Reflective vests, gloves, safety glasses, helmets, and safety footwear must be used on a daily basis.
- **Order and cleanliness:** A clean and well-organized environment reduces the risk of tripping, spills, and collisions.
- **Height control and signage in warehouses:** The recommended clearance height in warehouses and logistics centers for vehicle and load circulation is 4.5 meters, to which a minimum safety margin of 0.30 meters must be added. In total, a minimum usable height of 4.80 meters must be ensured. All areas with height restrictions must be clearly marked to avoid accidents and structural damage. Additionally, when a dangerous maneuver is to be performed, the area must be properly marked and cordoned off to restrict access for both pedestrians and vehicles.
- **Specific risk assessment:** The company must prepare a document identifying and detailing the specific risks each job position is exposed to. These assessments must be carried out by the Health and Safety Coordinator, who will be responsible for analyzing working conditions and defining the corresponding individual and collective preventive measures.